

Tire Changer Accessories



Visit hunter.com/shop to order select genuine Hunter® tire changer consumable parts online.
Outside the U.S.? Use the link to get in touch with your local Hunter team.



Accessories for

REVOLUTION™ AND MAVERICK®

The standard Revolution and Maverick tire changers come equipped to handle virtually all tire and wheel combinations.

A	RP6-3784	Paste
B	RP6-1506	Paste brush
C	69-1394-2	Pin protector
D	221-759-2	Valve core remover
E	221-659-2	Bead starting tool
F	RP11-2020688	Valve puller
G	192-233-1	In-between cone
H	192-223-2	Small polymer cone
I	192-226-1	Double-sided polymer cone
J	111-154-1	Spare roller
K	221-810-2	SmartSet mount head (TCM only)
L	179-15-2	Glasses
M	221-713-2	Polymer mount head
N	69-1392-2	Rubber platen cover
O	213-58-1	Mirror (TCM only) (not pictured)



The following options can be used to enhance serviceability of specialized applications.



Flange plate kit – 20-3158-1

Ideal for plastic clad wheels or reverse wheels where maximum protection is needed. Diameter range 98 to 240 mm.

Standard with TCRH, compatible with TCX51C



Flange plate accessory pin kit 20-3675-1

For wheels with extreme lug hole and lug depth variances.



Dual wheel adaptor 20-2964-1

Optional adaptor adds clamping capability for dual wheels, 19.5 in. wheels and other wheels with large center holes.



Specialty pin kit – 20-3877-1

Pins have rounded tips for spherical lug seats and are shorter to reduce stack height for reverse applications.



Thick bead kit – 20-3160-1

Wider hook for thicker beads. Suitable for skid steer, load range G-H-J-tires. Plus, reverse wheel plate for 19.5- and 17.5-in. rims.



TCRH



TCM

Accessories for **TCA-SERIES**

The standard Auto34R tire changer comes equipped to handle virtually all common tire and wheel combinations.

A	RP6-G1000A138	Quick clamp
B	RP6-710090481	Pin protector
C	RP6-710012940	Pin extension
D	145-341-2	Air chuck
E	RP6-710090730	Traction bar
F	148-133-2	Lubrication oil
G	RP6-3784	Paste </td
H	221-659-2	Bead starting tool
I	RP6-1506	Paste brush
J	RP6-710013421	Support plate cover
K	179-15-2	Glasses
L	RP6-710014120	Toolhead
M	RP6-1157	Two-sided cone
N	RP6-G1000A86	Mirror



The following options can be used to enhance serviceability of specialized applications.



Flange plate kit RP6-G1000A87

Optional kit is ideal for plastic-clad wheels or reverse wheels where maximum protection is needed.



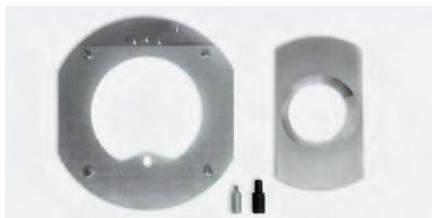
Basic flange plate RP6-G1000A123

Optional kit handles plastic-clad wheels without the need of reverse applications.



Specialty flange plate for center-clamp tire changers 20-3892-1

Rounded pins are compatible with spherical lug seat wheels. Base is also compatible with Hunter pin kit 20-3675-1



19.5 inch adaptor – 20-2341-1

Adds clamping capability for 19.5 in. wheels with large center holes.



TCA34R

Standard accessories for **TC-SERIES**

Each Hunter TC-series tire changer includes a variety of accessories to help service a wide range of tire and wheel combinations.

			TC39	TC37	TC33BP	TC33PL	TC33	TC33M	TC33MBP
A	20-3781-1	Bead press arm			✓				✓
B	20-3782-1	Plus arm device				✓			
C	RP6-G1000A138	Quick clamp	✓	✓	✓	✓	✓	✓	✓
D	148-133-2	Lubrication oil	✓	✓	✓	✓	✓	✓	✓
E	179-15-2	Safety glasses	✓	✓	✓	✓	✓	✓	✓
F	RP6-3784	Mounting paste	✓	✓	✓	✓	✓	✓	✓
G	RP6-1506	Paste brush	✓	✓	✓	✓	✓	✓	✓
H	RP6-710090730	Traction bar	✓	✓					
I	Varies	Extra mount head	✓	✓	✓	✓	✓	✓	✓
J	RP6-G800A11	Shovel protector			✓	✓	✓		
K	RP6-1157	Two-sided cone	✓	✓	✓	✓	✓	✓	✓
L	RP6-710013421	Support plate cover	✓	✓	✓	✓	✓	✓	✓
M	RP6-G1000A86	Mirror	✓	✓				✓	✓
N	RP6-G1000A11	"HM" bead lever		✓					
O	RP6-710090481	Pin protector	✓	✓	✓	✓	✓	✓	✓
P	RP6-710012940	Drive pin extension	✓	✓	✓	✓	✓	✓	✓
Q	RP6-0326	Bead protector sleeve		✓					



TC39SS



TC37

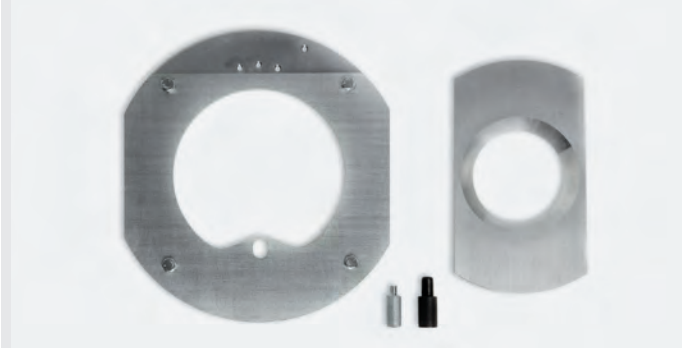


TC33BP



TC33M

Accessories for **TC-SERIES**



19.5-inch truck center cone adaptor kit 20-2341-1

Adapts large center-bore wheels to center-clamp tire changers.



Rubber protection plate for center-clamp tire changers – RP6-710013421

Soft, rubber pad protects rim when servicing reverse wheels. Intended to be removed when not servicing reverse wheels.



Flange plate for center-clamp tire changers – RP6-G1000A87

Useful for plastic-faced wheels and/or reverse wheels where maximum finish protection is needed. Max diameter 230mm.



Flange plates for clad wheels RP6-G1000A123

For plastic-faced wheels only.



Specialty flange plate for center-clamp tire changers – 20-3892-1

Rounded pins are compatible with spherical lug seat wheels. Base is also compatible with Hunter pin kit 20-3675-1



Long flange plate pins RP6-G1000A102

Optional pins are longer, allowing servicing of reverse wheels with extra deep spokes. For use with Hunter center-clamp flange plate RP6-G1000A87.

Requires longer clamp shaft RP6-710013641



Short drive pin – 135-486-2

Useful when servicing some reverse wheels. Also useful in combination with older [20-2341-1] 19.5 kits and GM 16 in. dually wheel service.

Standard with 19.5 in. kit 20-2341-1.



Drive pin protectors for center-clamp tire changers RP6-710090481 (1 ea.)

Plastic cap protects lug holes of reverse wheels when clamped face down.

Accessories for **TC-SERIES**



Polymer mount head (1 ea.) 221-675-2

Rides closer than steel designs, reducing stress to beads when demounting and mounting low-profile tires. Wear component designed to protect the tire and rim.

221-675-2-B Polymer mount heads (6 ea.)



Wide toolhead – 221-798-2

Fiberglass reinforced nylon provides great wheel protection and long service life.

Suitable for TCA series and TC39 tire changers.



Shaft extender RP6-790012540

Useful to extend the clamping shaft when used with older RP6-G1000A87 flange plates.



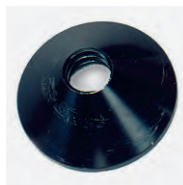
Mechanical bead roller RP6-G1000A7

Pushes the upper bead of the tire below the right hand area of the mount head keeping the tire in the proper location during mounting. Eliminates extra work to mount stiff tires.



Plastic shovel protectors (1 ea.) RP6-G800A11

Clip-on side shovel protectors prevent damaging metal-to-metal contact when bead loosening.



Cone cover, wheel hub protector RP6-1156

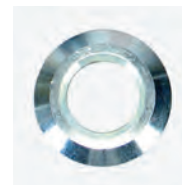
Protects the wheel hub bore from contact when center-clamping.



Rimsled & mount head kit – RP6-G1000A91K

Provides additional protection for painted or plastic-clad rims. Rimsled only fits "black" mount heads supplied in kit.

A	RP6-G1000A14	Individual mount head
B	RP6-12916	Rim protector (box of 50)



Two-sided cone for LT wheels RP6-1157

For use with the regular-sized clamping cone when the wheel hub bore is larger than the standard cone.

Accessories for **TCX51C AND TCX51M**

Hunter TCX51C and TCX51M center-clamp tire changers includes a variety of accessories.

A	20-4019-1	FastBlast with press arm and locking lower disc <i>Optional for TCX51M</i>
B	RP6-3784	Mounting paste 3.5 kg
C	RP6-1506	Applicator brush
D	RP11-8-11400327	Bolt-on plastic head
E	221-659-2	Bead starting tool
F	179-15-2	Safety goggles
G	RP11-5-490223	Plastic shovel protector (4) <i>Not applicable to TCX51M</i>
H	RP11-8-11400098	Bead lever protector sleeve (4)
I	RP11-3009516	Bead lever (standard)
J	RP11-4-145764	120 mm cone protector
K	RP11-4-145765	145 mm cone protector
L	RP11-4-103235	58 mm small bore cone
M	RP11-4-118294	75 mm small bore cone
N	RP11-5-102722	Shaft spacer



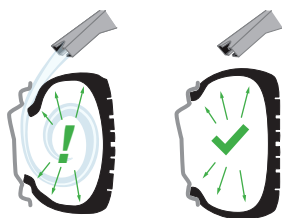
FastBlast with press arm and locking lower disc – 20-4019-1

Top-side blast inflation system is optimized to seat difficult tires.

✓ Large 6.5 gallon air tank features a higher capacity than most portable inflation devices

✓ Traditional jaw blast inflation is still standard and effective for most tires

Standard on TCX51C, optional for TCX51M



TCX51C

TCX51M



Flange plate kit – 20-3158-1

Required for plastic clad wheels or reverse wheels where maximum protection is needed. Diameter range 98 to 240 mm.



Large Bore Clamping Kit 20-4018-1

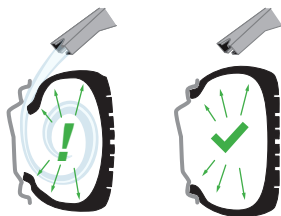
Adds clamping capability for truck wheels with large center holes. Also adds clamping height for high offset and wide wheels.

Standard accessories for **TCX-SERIES**

Hunter TCX-series tire changers include a variety of accessories to service a wide range of tire and wheel combinations.

			TCX59	TCX59 Pro	TCX58	TCX53	TCX51	TCX51H Plus	TCX50
A	FastBlast	FastBlast with press arm and locking lower disc	✓	✓	✓				
	RP11-8-11100441	FastBlast with press arm, no lower disc						✓	
B	20-3881-1	Hybrid leverless mount head		✓					
C	Leverless	Leverless mount head	✓						
D	BP	Single bead press arm					✓	✓	
E	BPS	Bead press system w/ two press rollers and lower lifting disc				✓			
F	20-3882-1	Bead press system exclusive to TCX59 Pro		✓					
G	RP11-2121350	Large pressing cone				✓			
H	RP11-2413305	Small pressing cone				✓			
I	RP11-2202239	Pressing cone extension				✓			
J	RP6-3784	Mounting paste 3.5 kg	✓	✓	✓	✓	✓	✓	✓
K	RP6-1506	Applicator brush	✓	✓	✓	✓	✓	✓	✓
L	RP11-4-403749	Bead press cone	✓	✓	✓				
M	RP11-8-11100425	Hi-grip jaw protector	✓	✓	✓	✓	✓		✓
N	RP11-8-11400327	Bolt-on plastic head			✓	✓	✓	✓	✓
O	179-15-2	Safety goggles	✓	✓	✓	✓	✓	✓	✓
P	RP11-5-490223	Plastic shovel protector (4)	✓	✓	✓	✓	✓	✓	✓
Q	RP11-8-11400098	Bead lever protector sleeve (4)	✓	✓	✓	✓	✓	✓	
R	221-659-2	Bead starting tool	✓	✓	✓			✓	
S	RP11-8-11400325	Leverless mount head inserts	✓	✓					
T	RP11-2202106	Rim edge protector	✓	✓	✓				
U	RP11-2020688	Valve stem puller	✓	✓	✓				
V	221-759-2	Valve core remover	✓	✓	✓				
W	RP11-3009516	Bead lever (standard)	✓	✓	✓	✓	✓	✓	✓
X	RP11-8-11100369	Mount head inserts (traditional)			✓				

A Top-side blast inflation system is optimized to seat difficult tires.



Large 6.5 gallon air tank features a higher capacity than most portable inflation devices

Traditional jaw blast inflation is still standard and effective for most tires

FastBlast™ inflation with press arm and locking lower disc highlighted



TCX59



TCX58



TCX53H



TCX51H



TCX50H

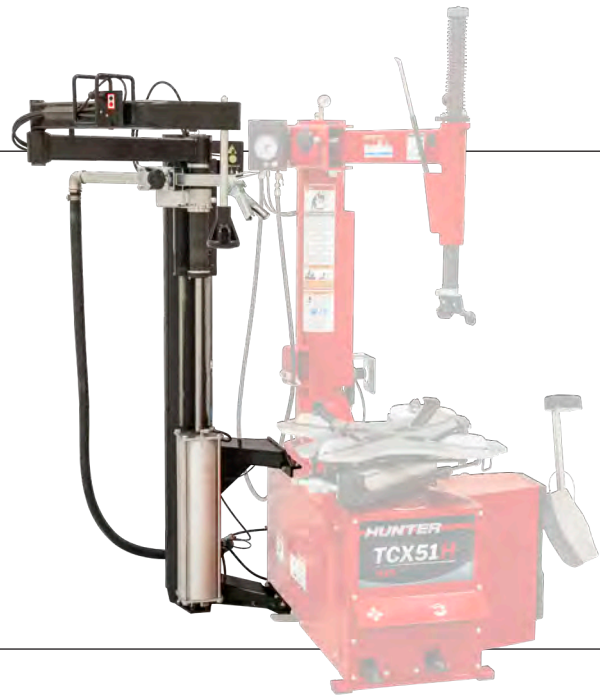
BEAD ASSISTANCE



Bead press arm for TCX50 series 20-3660-1

- ✓ The pressing head pushes the tire into the drop-center when mounting or demounting stiff sidewall tires, greatly reducing operator effort and risk of bead damage
- ✓ Lifting hook can be used to lift heavy beads into position
- ✓ Suitable for TCX50 machines with serial number IPD7742xx and up
- ✓ Optional press cone can be used with press head to push the wheel into position for easier external clamping

Standard with TCX51 (E, A or H models)



FastBlast™ bead press for TCX "H" models RP11-8-11100441

- ✓ Includes bead press foot with integrated lifting hook
- ✓ Adds FastBlast™ capability to quickly, safely, and easily seal truck, SUV, and aftermarket tires

*Standard on TCX51H Plus only.
Upgrade for TCX50H and TCX51H*



PATENTED

Bead press system for TCX50 series 20-2834-1

- ✓ Uniquely centers the pressing capabilities over the center of the wheel and tire to ensure maximum service strength and rigidity
- ✓ Provides effortless assistance with most difficult tires and custom wheels up to 26" diameter
- ✓ Not suitable for older TCX5X5 variations

Kit includes:

Bead press system with stationary arm, rotating arm & bead lifting arm

Small pressing cone **RP11-2413305**

Large pressing cone **RP11-2121350**

Pressing cone extension **RP11-2202239**

Standard with TCX53 (E, A or H models)

Accessories for **TCX-SERIES**



Jaw extender & reducer (4 ea.) **RP11-8-11100402**

Extends range by 4 inches.
Reduces range by 5 inches.

Service for small wheels (6-8 in.), requires the use of the RP11-8-11100378 small wheel mount head.



Jaw reducer (4 ea.) **RP11-8-11100430**

Quickly slip over jaws. Works with all tabletops, with and without protectors installed.



Motorcycle wheel adaptor **RP11-2201113**

Raise clamping jaws to clear belt drive pulley and brakes used on motorcycles, including Harley Davidson. Plastic-covered to prevent wheel damage.



High grip jaw protectors (8 ea.)

Snap-fit design – **RP11-8-11100358**

Pinned design – **RP11-8-11100425**

Polymer jaw covers prevent metal-to-metal contact when performing external clamping.



Large Bore Clamping Kit **RP11-8-11100417**

Large bore clamping kit for TCX51C. Also adds vertical offset to handle very wide wheels.

Only compatible with TCX51C



Storage shelf – 20-3677-1

Large steel shelf system expands storage capacity. Left or right mount.



Blast inflator – RP11-8-11100403

Direct bursts of compressed air to seat difficult beads

Suitable for TCX50/51/53 only.



Plastic shovel protectors (4 ea.) **RP11-5-490223**

Clip-on side shovel protectors prevent damage when bead loosening low-profile tires on expensive alloy wheels.



BP press cone – RP11-4-403749

Clamping press cone.

Suitable for TCX51, TCX58, and TCX59

Standard on TCX58 and TCX59.

Mount heads and accessories for

TCX-SERIES

Plastic mount heads



"Wing" plastic mount head upgrade for new tire changers RP11-8-11400328

Includes 2 plastic heads and hardware to add rotation.

Suitable for TCX50 serial numbers higher than IKE721041 and TCX56 head kit serial numbers higher than VKI046785.



"Wing" plastic mount head upgrade for older tire changers RP11-8-11400329

Includes plastic head and all mounting hardware.

Suitable for TCX50 serial numbers lower than IKE721041 and TCX56 head kit serial numbers lower than VKI046785. Also suitable for all older TCX565, 550, 5x5 and 500 tire changers.



"Wing" plastic mount head RP11-8-11400327



Plastic mount head RP11-8314813

Old mount head fits all TCX-series tire changers

Steel mount head & accessories



"Wing" steel mount head RP11-5-107785

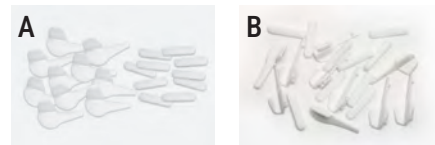
Includes steel head and all mounting hardware. Ideal for trailer and multi-ply tires.



Small-wheel steel mount head RP11-8-11100378

Easily service wheels down to 6" dia. (golf cart and scooter wheels). Use with extenders and reducers.

Compatible with TCX 50/51/53 E/A/H models only. Shown with RP11-8-11100370 plastic protectors (not included).



Plastic protectors

A. For steel mount heads (10 ea.) RP11-8-11100369

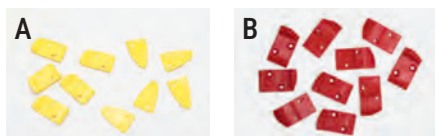
For use with TCX-series steel mounting head (RP11-5-107785)

B. For small-wheel steel mount heads (10 ea.) RP11-8-11100370

For use with new TCX-series steel mounting head (RP11-8-11100378)

Leverless mount head accessories

For V1 & V2 heads



A. Inserts (10 ea.) RP11-8-11400293

B. Right side plastic protectors (10 ea.) 20-2684-3

For V3 heads



A. Inserts (incl. 10 left and 5 right) RP11-8-11400325

B. Single right-side insert RP11-8-1110326S

For V1, V2 & V3 heads



A. Rear plastic protectors (10 ea.) 20-2685-3

B. Replacement screw for protector (3 required) RP11-2-03438

WHEEL LIFT SYSTEMS

Servicing large, heavy SUV, light-truck and custom wheels requires extra effort. Optional pneumatic wheel lifts help prevent potential injuries and fatigue from lifting heavy wheels into place. The pedal-controlled wheel lift quickly raises the wheel, leaving the technician's hands free to control and position it on the tire changer clamping system.

A wheel lift can be ordered with newly purchased tire changer or separately as a retrofit kit. See the chart below for part numbers.

Wheel lift part number (if ordered separately)

20-3442-1	20-2045-1	20-3863-1	20-3884-1
TC39 (Standard with TC39W)	TCX59 (Standard with TC59W)	TCX51C	TCM (Standard with TCMW)
TC37 (Standard with TC37W)	TCX58 (Standard with TC58W)		
TC33	TCX53E (Standard with TC53EW)		
TC33M	Other TCX50-500		

Integrated wheel lifts boost productivity and help prevent injury and fatigue



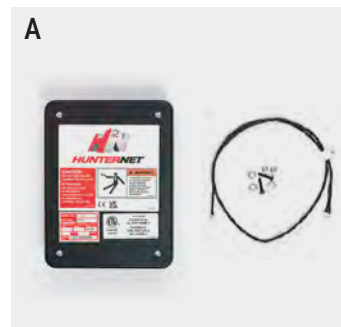
Optional 20-3442-1 wheel lift shown



CONNECTIVITY KIT

A	20-3914-1	TCM only
B	20-3871-1	TCX56, TCX57, TCX58, TCX59, TCX59Pro, and TCX5xH models

- ✓ Record individual tire changes with inflation pressure
- ✓ Track tire changing trends
- ✓ See equipment return on investment
- ✓ Combine with other connect-able Hunter equipment for a complete shop view



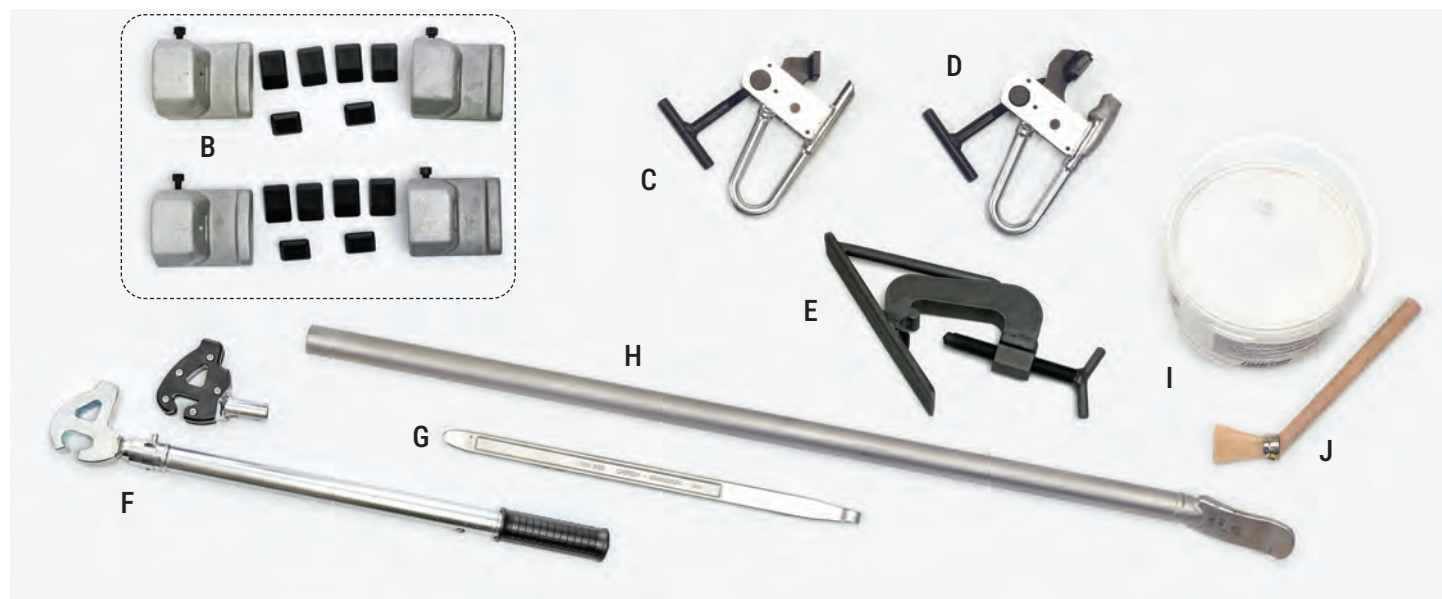
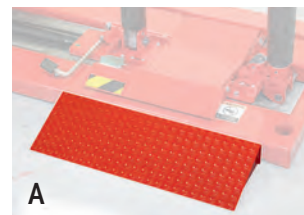
Power Requirements	Supplied by tire changer via provided cable
Internet Requirements	10 Mbps wired or wireless internet connection
Wireless Requirements	Dual-band 2.4/5GHz 802.11 a/b/g/n Wi-Fi
Wired Requirements	Standard RJ45 ethernet connector



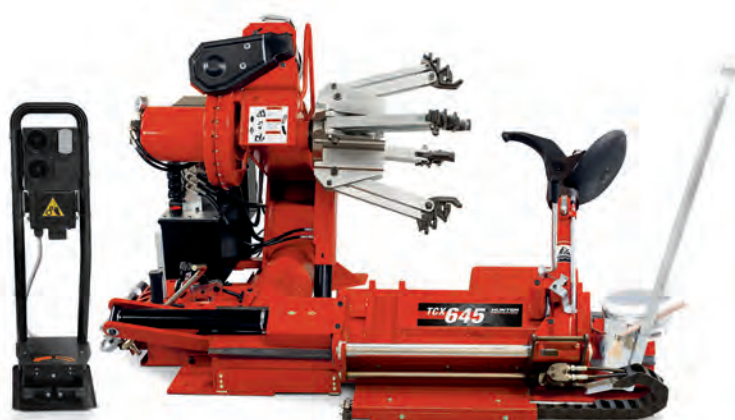
Installs on back side of machine (TCM shown here)

Standard accessories for **HEAVY-DUTY TIRE CHANGERS**

			TCX635HD	TCX635PHD	TCX645HD
A	RP11-8-12100040	Wheel ramp		✓	
B	RP11-8-12100156	Alloy wheel clamp jaws (4)		✓	✓
C	RP11-2005957	Steel wheel clamp	✓	✓	✓
D	RP11-2306808	Alloy wheel clamp	✓	✓	✓
E	RP11-801251904	Drop-center clamp			✓
F	RP11-8-12100181	Mounting lever (steel & ALU heads)		✓	
G	RP11-3006365	Standard lever	✓	✓	✓
H	RP11-2105954	Truck bead lever	✓	✓	✓
I	RP6-3784	Mounting paste	✓	✓	✓
J	RP6-1506	Brush	✓	✓	✓



TCX635HD



TCX645HD

HEAVY-DUTY TIRE CHANGERS

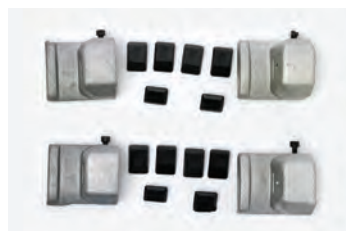
TCX635HD



Aluminum jaw covers (4 ea.) RP11-801254494

Prevents center-bore damage on aluminum wheels.

Suitable for TCX625 models prior to serial number IPC301799K.

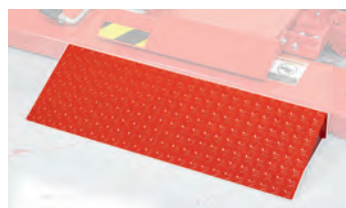


Alloy wheel clamp jaws (4 ea.) – RP11-8-12100156

Clamping protection for alloy wheels.

Suitable for all TCX635 and TCX625 models after serial number IPC301799K.

Standard with TCX635PHD



Entry/exit ramps RP11-8-12100040

Ease rolling tire onto changer.

Compatible with TCX625 and TCX635

Standard with TCX635PHD



Disk roller – RP11-2016908

Bead-loosening roller for all vintage TCX62xHD and TCX635 tire changers



Mounting lever – RP11-8-12100181

Speeds outside bead mounting. Includes steel wheel and ALU wheel heads.

Standard TCX635PHD

TCX645HD



Tubeless roller RP11-2306040

Eases bead loosening, mounting and demounting of tubeless truck and bus tires.



Alloy wheel clamp jaws (4 ea.) RP11-8-12100156

Clamping protection for alloy wheels

Suitable for TCX640 and 645 models after serial number IPC301799K.



Tire cutter – RP11-8-12100185

Quickly and easily cut foam filled tires off the wheel



Drop-center clamp RP11-801251904

For skidder and similar type tires

Standard with TCX645HD



Self-centering tulip chuck extensions (4 ea.) RP11-8-12100155

Expands clamping size capacity to 56 inches.



Pneumatic bead press and traction device – RP11-2201677

Compatible with TCX635HD



Wireless control kit 20-3842-1

Eases use of control console



Alloy jaws insert RP11-8-12100172

For use on units with serial number IIC735988 or greater.

UNIVERSAL ACCESSORIES



A. High-performance bead lever "HM" – RP6-G1000A11

Ease servicing effort, specifically with low-profile tires.

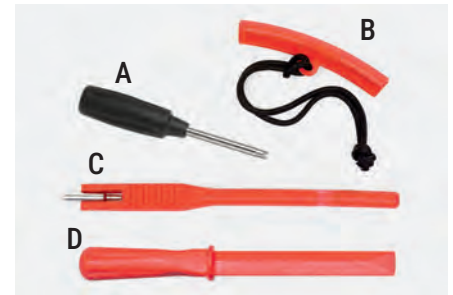
B. Bead lever protector sleeve
RP6-0326 (1) | RP6-0326 (box of 10)
Protects wheel flange during demounting.



A. Traditional flat design bead lever – RP11-3009516

For conventional demounting

B. Bead lever sleeve protectors
(4 ea.) – RP11-8-11400098
Protects wheel flange during demounting.
For use with RP11-3009516



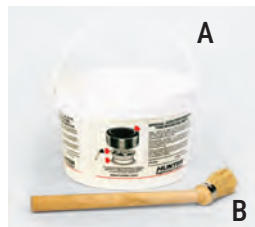
A. Valve core remover – 221-759-2
B. Rim edge protector – RP11-2202106
C. Valve stem puller – RP11-2020688
D. Bead starting tool – 221-659-2

A. Mounting paste (3.5 kg) RP6-3784

High-performance, pre-mixed paste eases mounting and allows faster bead sealing during inflation.

RP6-3784-C = 4 Buckets
RP6-3784-CP = 64 Buckets

B. Brush, angled applicator – RP6-1506

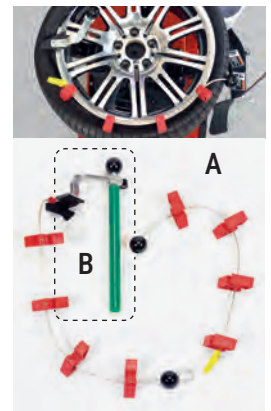


A. 28-in. bead depressor tail with traction bar RP6-G1000A67

Locks low-profile tire to rim, pushes into drop center, and keeps upper bead lubricated. Services up to 28 in. diameter rims.

B. Traction bar (only) RP6-710090730

Used to lock tire to rim.



Lubri-Oil air equipment lubrication 148-133-2

Lubri-Oil will not emulsify in water – will separate when contaminated with water overflow from the regulator.

Available in 16-oz bottles. Twelve (12) to a case when ordered in quantity. Lubri-Oil weight is ISO32.



Drop-center mounting clamp RP6-70210E

Positions bead into the drop-center.
Not for extreme positive offset, flat-faced rims or soft-line flanges.

Your local Hunter team is ready to help

- ✂ Receive same- or next-day service
- 📞 Get a free quote or on-site demo
- 📅 Register for ASE-accredited training courses
- 📖 General information and questions



Contact your local team

hunter.com/contact

Because of continuing technological advances, specifications, models and options are subject to change without notice.

Maverick is a registered trademark of Hunter Engineering Company.
Revolution and FastBlast are trademarks of Hunter Engineering Company.

HUNTER
Engineering Company

www.hunter.com