

Nussbaum

POWER LIFT HL 2.35 NT MB

3500 KG

FULLY HYDRAULIC, TWO-POST LIFT.

FASTEST

LIFTING AND LOWERING TIMES
REDUCE COST OF WORKING PROCESS

MODERN

NT TECHNOLOGY

LOW-MAINTENANCE





POWER LIFT HL NT

HYDRAULIC TWO-POST LIFTS, TESTED AND APPROVED BY MERCEDES-BENZ

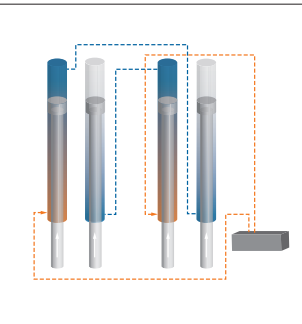


Diagram of NT technology

OPERATIONALLY RELIABLE

- NUSSBAUM NT technology: double master slave system
- Crossed-cylinder master – slave system provides a leveled lifting and lowering without the need for synchronization cables
- Load is secured at any working height without a mechanical ratchet

Ease of use and smooth movement

FAST, QUIET, POWERFUL.

FAST LIFTING AND LOWERING TIMES

- 20 sec of lifting and 14 sec lowering (HL 2.30 NT)
- Double cylinders pull load from both sides constant and safe

PROGRESSIVE CONTROL

- Lifting and lowering through ergonomic control lever
- Smooth and adjustable lowering possible

CURRENTLESS LOWERING – HIGH ENERGY EFFICIENCY

COST SAVINGS

Due to the fast lifting and lowering times, the **time saving** and **cost saving** are generated in the working process.

- Compare to the conventional lift, the POWER LIFT HL 2.35 NT MB saves approx. 50 s per one working process (1 x lifting / 1 x lowering). This means, by 6 working processes - 1 WU will be saved.
- Calculated only with 3 lifting and lowering processes per day, here you can already **save 0,5 labour value* per day**.
- By 210 working days per year, which corresponds 110 labour value* per working space.

*Labour value – each hour contains 12 labour values, which each labour value contains 5 minutes



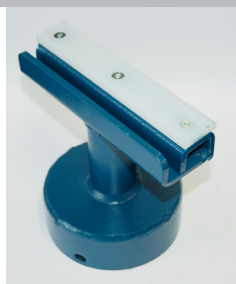
POWER LIFT HL 2.35 NT MB – SCOPE OF DELIVERY



Tested and homologated by Mercedes-Benz



Height adapter for G model without running-board (4 units)
Art.-Nr. 232SEL48258



Height adapter for G model with running-board (4 units)
Art.-Nr. 232SL08610



Document holder on column (1 unit)
Art.-Nr. 975075



Magnetic basket for wheel nuts (2 units)
Art.-Nr. 232SL29312SET

3.000 KG | 4.000 KG



FLEXIBLE CONSTRUCTION HEIGHT AND DISTANCE BETWEEN COLUMNS

- Standard construction height of 4040mm
- Adjustable construction height in 100mm steps with riser pipe extension from 4109mm up to 4909mm
- Adjustable top connection – Ideal columns positioning and minimum space required with an optimal drive-through width.



No floor connection

HOT GALVANIZED AND POWDER-COATED
Special coating for optimum corrosion protection, tested by the Fraunhofer institute

ASYMMETRIC LIFTING ARMS CONSTRUCTION



Optimal door clearance
Arrangement of lifting arms is always asymmetric



Telescopic lifting arms with minimum of lowest pick-up point



Automatic adjustment of lifting arm with gearing, manual releasing possible

OPTION: ENERGY-SET

- Electricity and air pressure at the working space
- 220 V power socket and air supply, integrated in the column
- Integrated CE Stop with acoustic warning signal



OPTIONAL ACCESSORIES



Lashing strap (2 units)
Art.-Nr. 975086



Height adapter 50mm (4 units)
Art.-Nr. 232HEL48083SET



Height adapter 100mm (4 units)
Art.-Nr. 232HEL48087SET



Drive-on tables (4 units)
Art.-Nr. 235HL05130SET

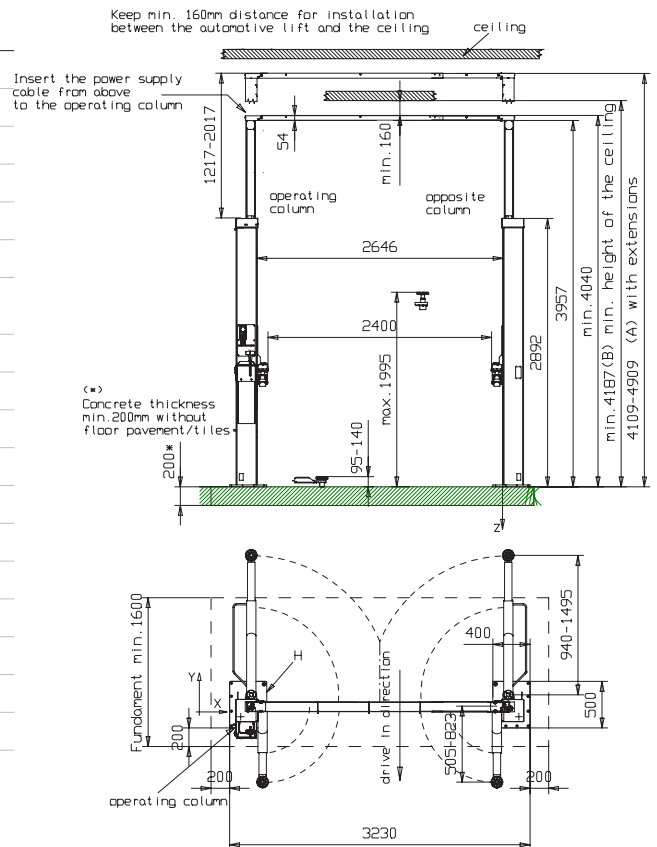


POWER LIFT HL 2.35 NT MB

HYDRAULIC TWO-POST LIFTS, TESTED AND APPROVED BY MERCEDES-BENZ

TECHNICAL DATA

POWER LIFT HL	2.35 NT MB
Lifting capacity (kg)	3500
Lifting/ lowering times (sec)	23 / 14
Lifting height (mm)	1995
Lowest lifting point (mm)	95-140
Clearance height (mm)	3957
Total height (mm)	4040
Total height with riser pipe extension (mm)	4109-4909
Total width (mm)	3230
Recommended setting width (mm)	3230
Drive-through width (mm)	2400
Distance between columns (mm)	2646
Long arms extraction (mm)	940-1495
Short arms extraction (mm)	505-823
Power supply (V/Hz/A)	400/50/16
Motor (kW)	3
Necessary ceiling height (mm)	min. 4182
Data sheet	7482-1_MB
Article number	HLNT235.0000100MB



MADE IN GERMANY

Nussbaum



The family business from Kehl am Rhein with over 1.200 employees and 120 trainees produces its products exclusively in Germany utilizing a vertical range of manufacturing using the latest technological processes and machines with complete quality control, making NUSSBAUM the leader for automotive lifts in Germany.

